



E-MAX MPX-2

MPX-2 16 POINT FIBER OPTIC DATA REPEATER



- 16 points of opto-isolated inputs
- less than 1 millisecond response
- Manchester Coding for Security Data
- Reed or solid-state relay outputs
- Self-contained - isolated DC/DC Converter at each end for 48 or 125 Vdc
- Available with multi-mode or single mode transmitters and receivers

The MPX-2 delivers fast, accurate, remote reproduction of 16 digital inputs. A 1 msec scan resolution is ideal to bring inputs from the field to a Sequence of Events Recorder, Annunciator, Computer or SCADA system.

Multiple MPX-2 units can be used to monitor contacts at various remote locations or provide bi-directional communication. The unit's fiber optic design includes electrical isolation and immunity to electrical noise. Fiber optics give this system a 1600 meter multi-mode and 9000 meter single-mode capability and result in lower installed costs over multipair wire installations.

ORDERING INFORMATION

Part Number	Type	Application	Fiber	Input
035D111	MPX-2	Transmitter	Multi-Mode	125 Vdc
035D112	MPX-2	Receiver	Multi-Mode	125 Vdc
035D120	MPX-2	Transmitter	Multi-Mode	5 Vdc
035D120	MPX-2	Receiver	Multi-Mode	5 Vdc
035D123	MPX-2	Transmitter	Multi-Mode	250 Vdc
035D124	MPX-2	Receiver	Multi-Mode	250 Vdc
035D141	MPX-2	Transmitter	Multi-Mode	24 Vdc
035D142	MPX-2	Receiver	Multi-Mode	24 Vdc

SPECIFICATIONS

DATA TRANSMITTER

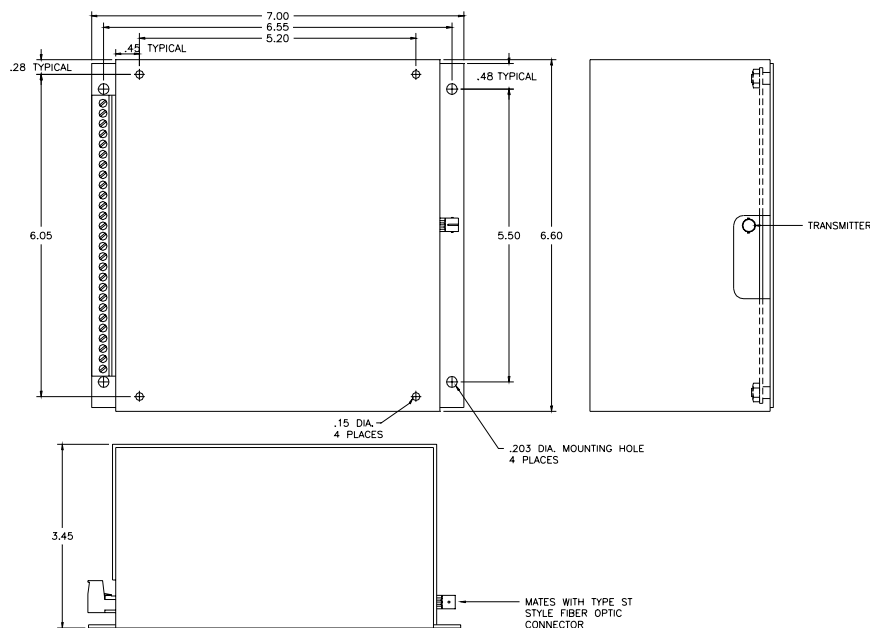
Input Points	16
Field Contact Input	Factory set for 5, 24, 48 or 125 Vdc
Input Noise Immunity	SWC Test
Power	DC/DC Converter 48 or 125 Vdc 5 Watts Max.
Isolation	2500 Vrms min. between pairs of points 1500 Vrms all circuits to ground
Wire Terminations	Disconnecting Switch Terminals Printed Circuit Board plug-in strip
Mechanical	Transmitter/Receiver Case
Dimensions	7 x 6.75 x 3 inches

DATA RECEIVER

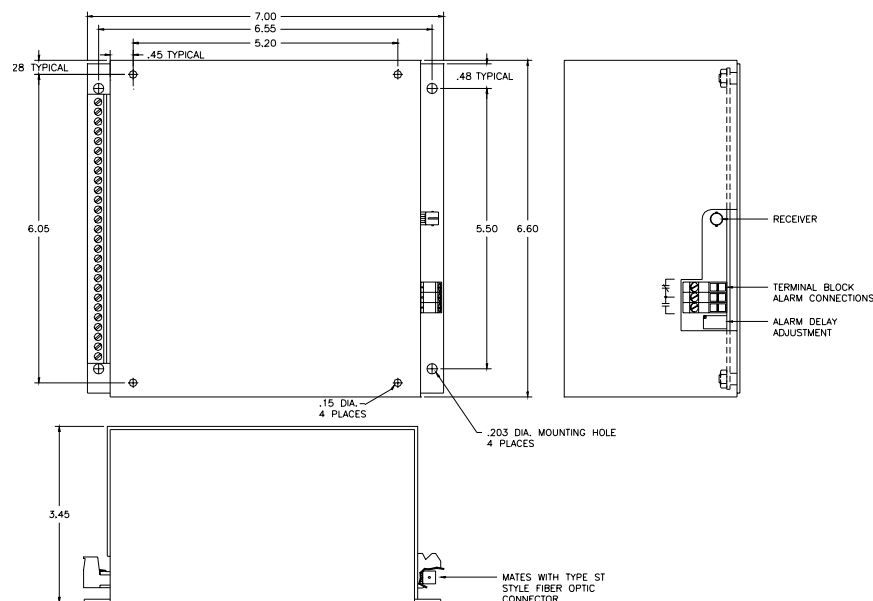
Receiver Output	1. Reed Relay 125 Vdc 100 mA 2. MosFET 400 V 2 A maximum
Loss of Data Alarm	Settable Delay of 1 to 5 seconds (invalid data or loss of fiber) SPDT Contact output - 125 Vdc 100 mA resistive
Circuit Isolation	1500 Vrms all output circuits
Power Supply	Requires 5 Vdc at 1 A. supplied by internal isolated DC/DC Converter
Temperature Range	
Operating	-25° to +70° C
Storage	-54° to +85° C
Humidity	0 to 95% R.H. Non-condensing

MPX-2 CASE DIMENSIONS

ALL DIMENSIONS IN INCHES



TRANSMITTER



RECEIVER