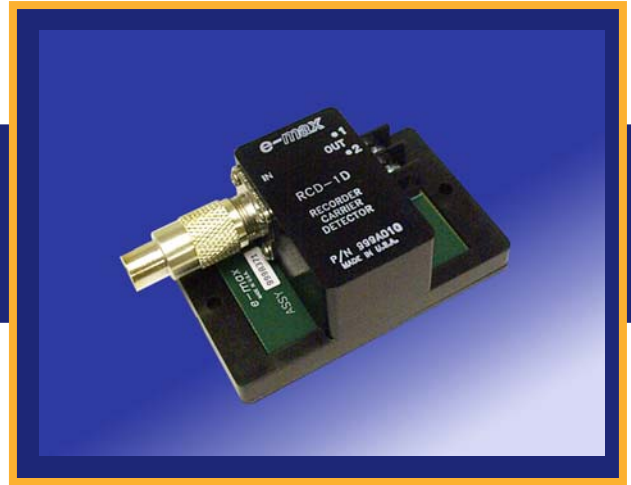




# E-MAX RCD

RECORDER CARRIER DETECTOR



The RCD is a carrier signal demodulator for SCADA and Fault Data Recording. The RCD demodulates the carrier to indicate the presence of a relative level of a signal. When connected to the input of a fault recorder, certain characteristics can be verified. These characteristics include:

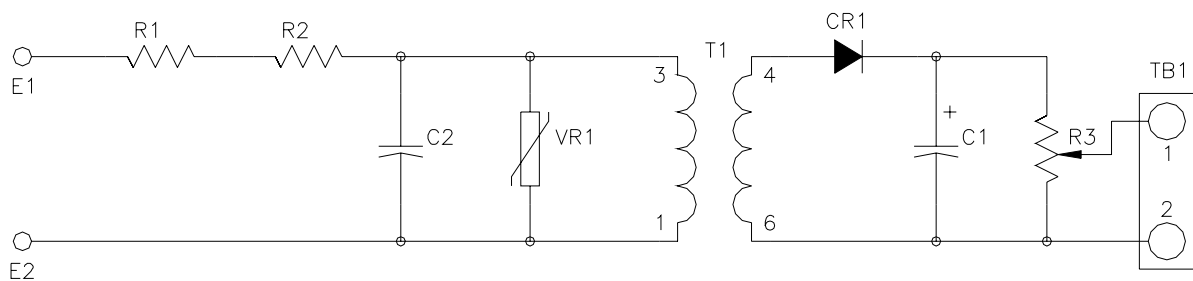
- Carrier drop-out
- Receipt of Keying
- Timing of Keying
- Blocking / unblocking signals

There are three models of the E-MAX RCD that deliver adjustable outputs. Each model features transformer isolated inputs and outputs. Installation is eased by the top mounted contacts. The case is constructed of rugged glass-coupled acetal copolymer.

## ORDERING INFORMATION

Part Number	Type	Rating
999A010	RCD-1	90 kHz to 500 kHz
999A011	RCD-1	20 kHz to 90 kHz
999A012	RCD-1	1 kHz to 20 kHz

## SCHEMATIC



## RATINGS SPECIFICATIONS

P/N 999A010  
Recorder Carrier Detector

P/N 999A011  
Recorder Carrier Detector

P/N 999A012  
Recorder Carrier Detector

90 - 500 kHz

20 - 90 kHz

1 - 20 kHz

R3 set at mid range

R3 set at Maximum

R3 set at Maximum

Frequency Input	DC Voltage Output	Frequency Input	DC Voltage Output	Frequency Input	DC Voltage Output
5 kHz	15.15 mV	20 kHz	.34 V	1 kHz	.42 V
10 kHz	.13 V	25 kHz	.42 V	5 kHz	.617 V
20 kHz	.34 V	30 kHz	.49 V	7 kHz	.626 V
30 kHz	.49 V	35 kHz	.56 V	8 kHz	.628 V
40 kHz	.60 V	40 kHz	.61 V	9 kHz	.629 V
50 kHz	.67 V	45 kHz	.65 V	10 kHz	.630 V
60 kHz	.69 V	50 kHz	.68 V	11 kHz	.631 V
70 kHz	.71 V	55 kHz	.69 V	12 kHz	.631 V
80 kHz	.70 V	60 kHz	.70 V	13 kHz	.632 V
90 kHz	.69 V	62 kHz	.71 V	14 kHz	.632 V
100 kHz	.68 V	63 kHz	.71 V	15 kHz	.632 V
150 kHz	.58 V	65 kHz	.72 V	16 kHz	.631 V
200 kHz	.48 V	69 kHz	.71 V	17 kHz	.631 V
300 kHz	.38 V	70 kHz	.71 V	18 kHz	.631 V
350 kHz	.33 V	71 kHz	.71 V	19 kHz	.631 V
500 kHz	.19 V	75 kHz	.71 V	20 kHz	.630 V
		80 kHz	.70 V		
		85 kHz	.69 V		
		90 kHz	.68 V		

## RCD CASE DIMENSIONS

ALL DIMENSIONS IN INCHES

