



E-MAX AC RELAYS

AC TRIP INDICATION RELAYS & AC VOLTAGE RELAYS



Introducing the next generation of E-MAX TIRs and AVR's. Delivering the same high reliability that has made these relays the industry standard, the new line features solid state design for use in AC circuits.

The new AC trip indication relay family is here. The ATR is an AC input / AC output unit, while the ATR-D is an AC input / DC output relay. Both the ATR and the ATR-D are available in 1 Amp, 2 Amp, and 5 Amp configurations

The new line of AC Voltage relays are the ACV's. These relays are solid state output with low power inputs. Two model configurations are available, the ACV for switching AC Voltages and the ACV-D for switching DC Voltages.

SPECIFICATIONS

Response Time: 5 msec maximum
Burden for all Relays: less than 0.5 Vamps

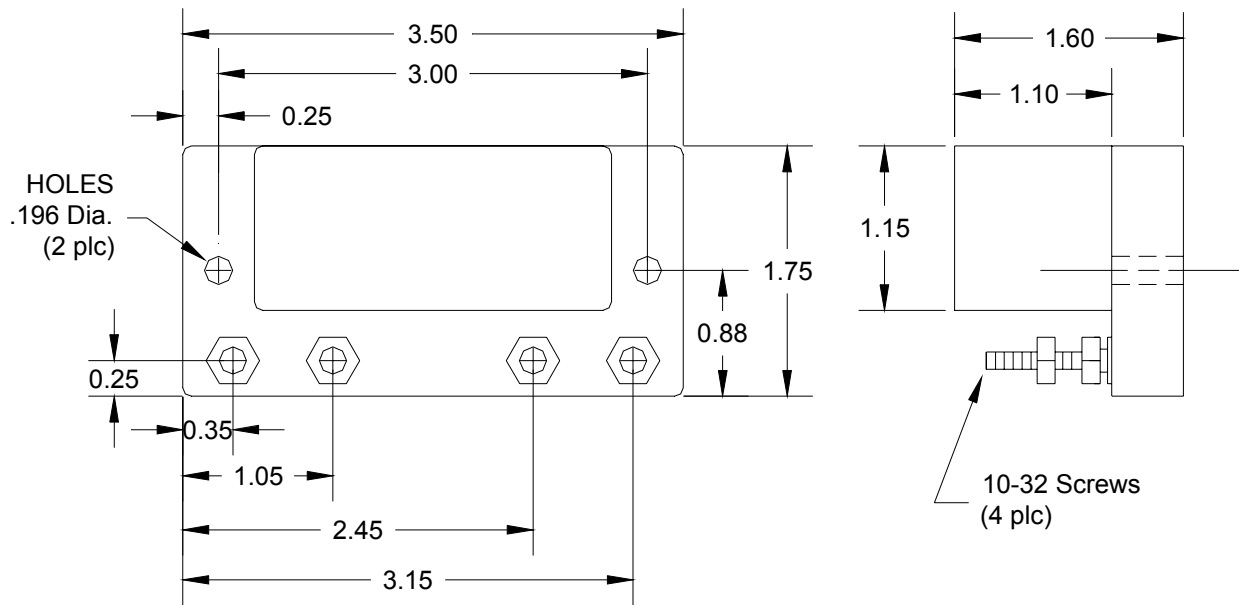
Part No.	Model	Rating	Minimum Operating	Output Switch	
				V Nominal	I Nominal
731A010	ATR	1 Amp	60%	120 Vac rms	1 Amp
731A020	ATR	2 Amp	60%	120 Vac rms	1 Amp
731A050	ATR	5 Amp	60%	120 Vac rms	1 Amp
731A510	ATR-D	1 Amp	60%	125 Vdc	1 Amp
731A520	ATR-D	2 Amp	60%	125 Vdc	1 Amp
731A550	ATR-D	5 Amp	60%	125 Vdc	1 Amp
879A010	ACV	120 Vac	60%	120 Vac rms	1 Amp
879A020	ACV	220 Vac	60%	220 Vac rms	1 Amp
879A510	ACV-D	120 Vac	60%	125 Vdc	1 Amp
879A520	ACV-D	220 Vac	60%	125 Vdc	1 Amp

Operating Temperature: 0° to 50° Centigrade
 Storage Temperature: -54° to 85° Centigrade
 Altitude Range: 0 to 50,000 feet
 Moisture Resistance: 95% Relative Humidity

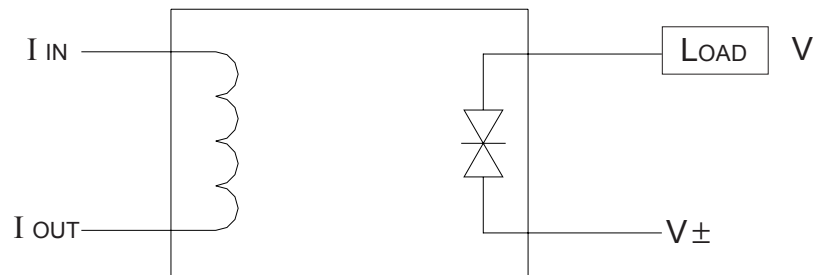
Life Expectancy: 1 x 10⁶ Operations Minimum
 Weight: 14 oz maximum
 Cycling Rate: 60 cps maximum

DIMENSIONS

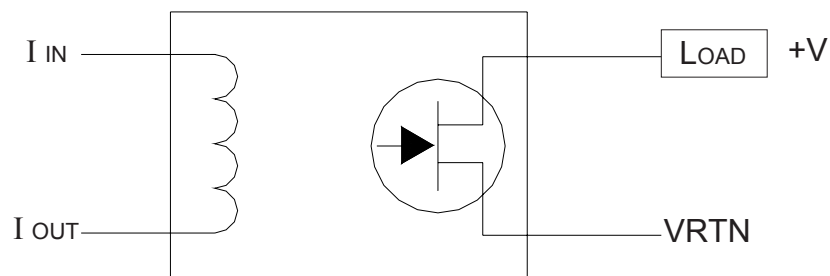
ALL DIMENSIONS IN INCHES



TYPICAL APPLICATION



AC Output



DC Output